

A woman with long dark hair, wearing a white sleeveless dress with a high collar and a full skirt, is posing in front of a large, ornate wooden door. She is holding a small white bag and wearing white shoes. The door has a grid of square panels, each with a carved floral design. The lighting is dramatic, with the woman's face and dress highlighted against the dark background of the door.

Short: Unconventional Femme

Anything goes for the risk-taking bride—increase the glam factor of a tea-length dress by going with creative details and unique accessories

Off-white satin dress with
wide-pleat neckline and
drop waist bubble skirt
with ribbon belt by Patty
Espino, fabric mules
with ribbon and floral accent
and matching pouch by Lila
Almario, antique ivory bangle
with carving (P10,000), gold
leaf faceted bracelets from
Ubang Panahon, satin gloves
from SM department store,
hair hat by Camp Suki, bag
by Lila Almario



This page On Grace: Fully beaded tulle bodysuit with crystal and paillettes, Mikado silk ballgown skirt with draping detail and pink satin sash by Rajo Laurel, fur and feather brooch (used as clip) by Paul Herrera. *Opposite* On Isabel: Poie de soie gown with crystal detail, satin sash and embellished guiperre lace mock bolero by Pepsi Herrera



Princess: The Girly Girl

The fairytale princess is alive and well as this generous bell-shape is an instant showstopper—balance proportions with a fitted bodice



This page On Grace: Fully beaded tulle bodysuit with crystal and paillettes, Mikado silk ballgown skirt with draping detail and pink satin sash by Rajo Laurel, fur and feather brooch (used as clip) by Paul Herrera. Opposite On Isabel: Poie de soie gown with crystal detail, satin sash and embellished guipierre lace mock bolero by Pepsi Herrera

Short: Unconventional Femme

Canvas lace-up corset and
asymmetric bubble skirt by
John Herrera, fabric mules
with Swarovski detail by Lila
Almario, gold hammered
flower earrings, gold branch
cuff both by Arnel Papa





Column: The Classic

The column gown is simple and effortless. No-nonsense with a keen attention to detail, the classic bride exudes quiet elegance. This streamlined silhouette instantly lengthens and adds height to petite frames.

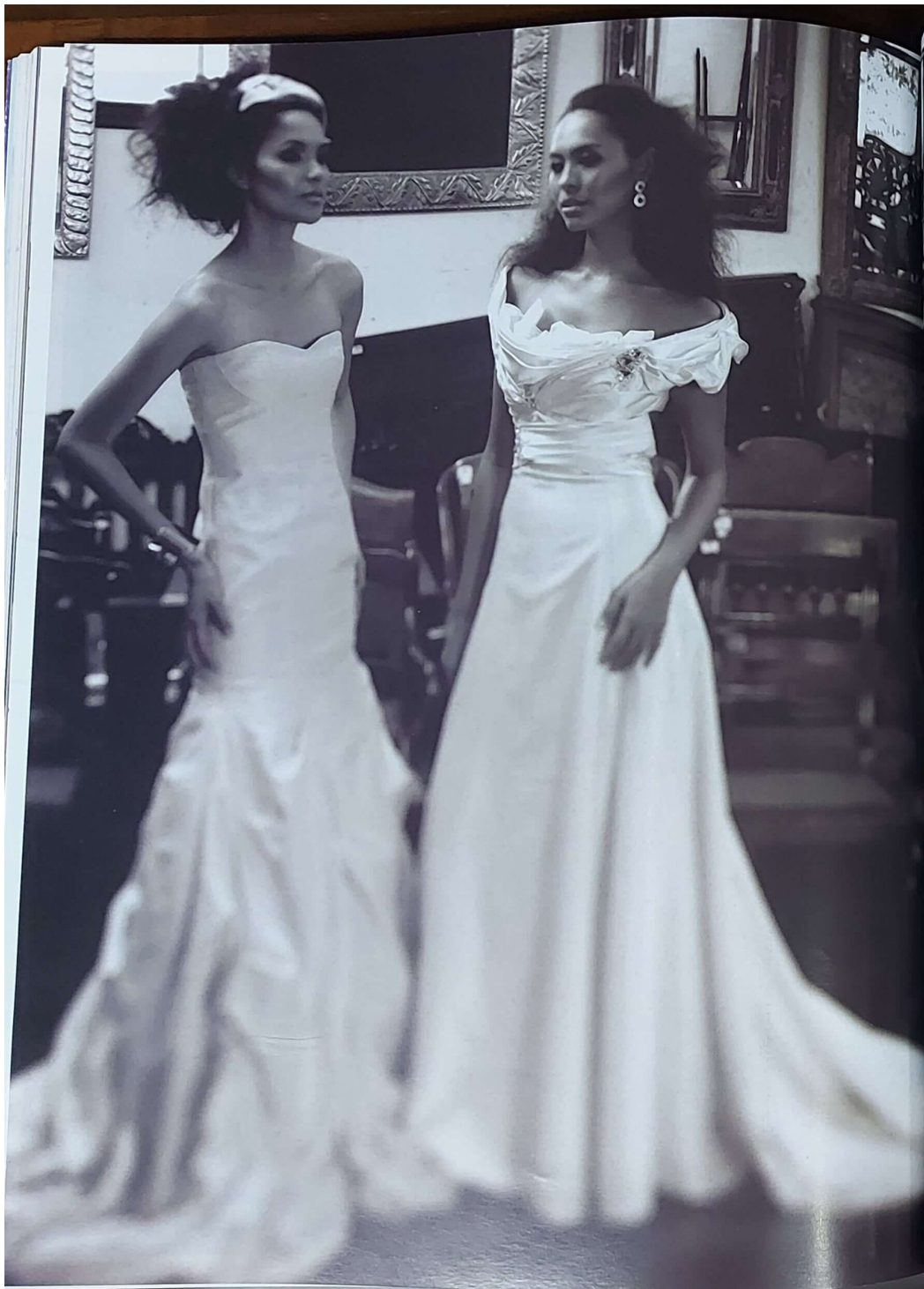
On Grace: Crushed taffeta with layered silk chiffon column gown with sugar beads and hanky drop hem by Dennis Lustico, heirloom faceted gold bead necklaces (used as bracelets) from Unang Panahon. On Isabel: Nude stretch tulle and georgette gown with metallic beading by Jun Escario, heirloom gold bead necklace with charms, gold ball necklace, tribal Indian pendant with rope chain, and Lansadera ring, all from Unang Panahon, cascade earrings with Swarovski crystals and gold cuffs by Arnel. Paper fur hat by Camp Suki.



Short: Unconventional Femme

Anything goes for the risk-taking bride—increase the glam factor of a tea-length dress by going with creative details and unique accessories.

Off-white satin dress with knife-pleat neckline and drop waist bubble skirt with ribbon belt by Patty Ecstaquio, fabric mules with ribbon and floral accent and matching pouch by Lila Almarino, antique ivory bangle with carving (P10,000), gold bead faceted bracelets from Unang Panahon, satin gloves from SM department store, fur hat by Camp Suki, bag by Lila Almarino.



Trains: Glamour Girl

Not for the wallflower, a floor-sweeping train is the silhouette of choice for the bride who knows exactly who she is and what she wants

On Grace: Off-white antique satin gown with draped detail by Ivarlusi Aseron, gold cuff with mother-of-pearl accent by Arnel Papa, 40s-style hat at Camp Suki. On Isabel: Oyster satin and tulle gown with wrapped bodice and cut-out back detail by Patrice Ramos-Diaz, double circle, mother-of-pearl earrings by Arnel Papa

The White Album

Against a backdrop of bridal whites, a gown's silhouette instantly captures the personality of the bride. Here, designers show off their skill with column, tea-length, long trains and princess-style gowns



Styled by Kitty Espintu; Photographed by Juan Cagucia, assisted by Bong Mercado on location at The Speculum Corporation; Makeup by Leo Posadas; Hair by Allan Arneilla; Models: Grace Tagle and Isabel Rocas (both for PMAF)

MEGA

JUNE 2005

g
everything

Celebrate Individuality

It's a thrilling moment for fashion right now. It's exploring new horizons and experimenting with anything and everything. Best of all, it allows women to bring out their personalities and cross fashion borders like never before. From mixing seemingly unrelated themes like Hindy Weber-Tantoco's ornate nautical-meets-Bollywood creations, to using fanciful bird accents, there's something for everyone. Even during this month of weddings, there is a perfect gown for every bride. Whether it's slim and lean or full and troufou, feminine and romantic or sultry and sexy, fashion celebrates the every woman.